

Funding & Incentives



Abby Hall

EPA Headquarters

Office of Policy, Economics and Innovation



Funding Options

- ❑ Stormwater Fees
- ❑ Clean Water State Revolving Fund
- ❑ Grants
- ❑ Local taxes and fees



Stormwater Fees

- ❑ Impervious based billing
- ❑ Not a tax
- ❑ Managed by utility or existing agency

Minneapolis's Stormwater Charge for Single Family Residences

<u>Tier</u>	<u>ESU</u>	<u>Stormwater Charge</u>
High	1.25	\$10.90
Medium	1.00	\$8.72
Low	0.75	\$6.54

Grants

- EPA
 - 319 grants
 - SRF
 - Targeted Watersheds Grants
- HUD
 - Community Development Block Grants
- Federal Highway Administration
 - Eco-logical Grant Program
- USDA Forest Service
 - Urban and Community Forestry Challenge Grants

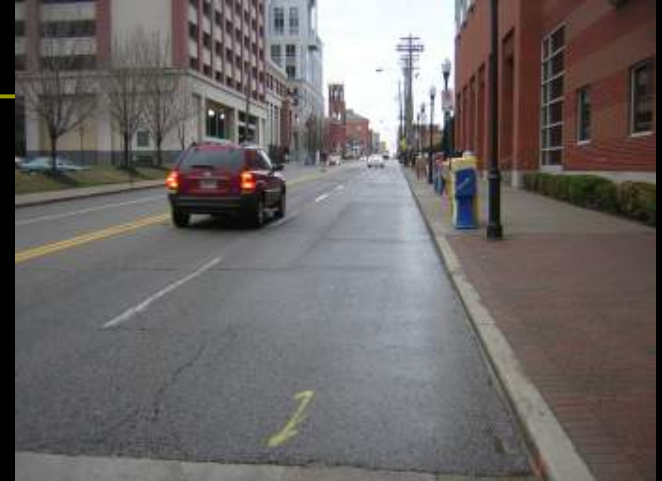
State Revolving Fund Program

- American Recovery and Reinvestment Act
- \$4 Billion for Clean Water
- \$2 Billion for Drinking Water
- Required 20% set aside for “green reserve”



State Revolving Fund

- Recipients can include:
 - Communities
 - Utilities
 - Individuals
 - Citizen's groups
 - Nonprofits
 - Businesses



State Revolving Fund Program

- ❑ Land Conservation
- ❑ Wetland Restoration
- ❑ Reforestation
- ❑ Parks & Greenways
- ❑ Tree Boxes
- ❑ Rain Gardens & Bioinfiltration
- ❑ Cisterns & Rain Barrels
- ❑ Permeable Pavements
- ❑ Downspout Disconnections
- ❑ Green Roofs



State Revolving Fund Program

- ❑ \$77 million for Virginia
- ❑ \$16 million for 13 "green infrastructure" projects, ranging from water recycling to alternative energy
- ❑ Virginia's Department of Environmental Quality received 294 requests totaling more than \$1.3 billion

<http://www.epa.gov/water/eparecovery/faq.html#3>

Local taxes and fees

- Developer fees
 - Plan Review, Permits, Assessment
- Fee-in-lieu
- Impact fees
- Property taxes
- Sales tax



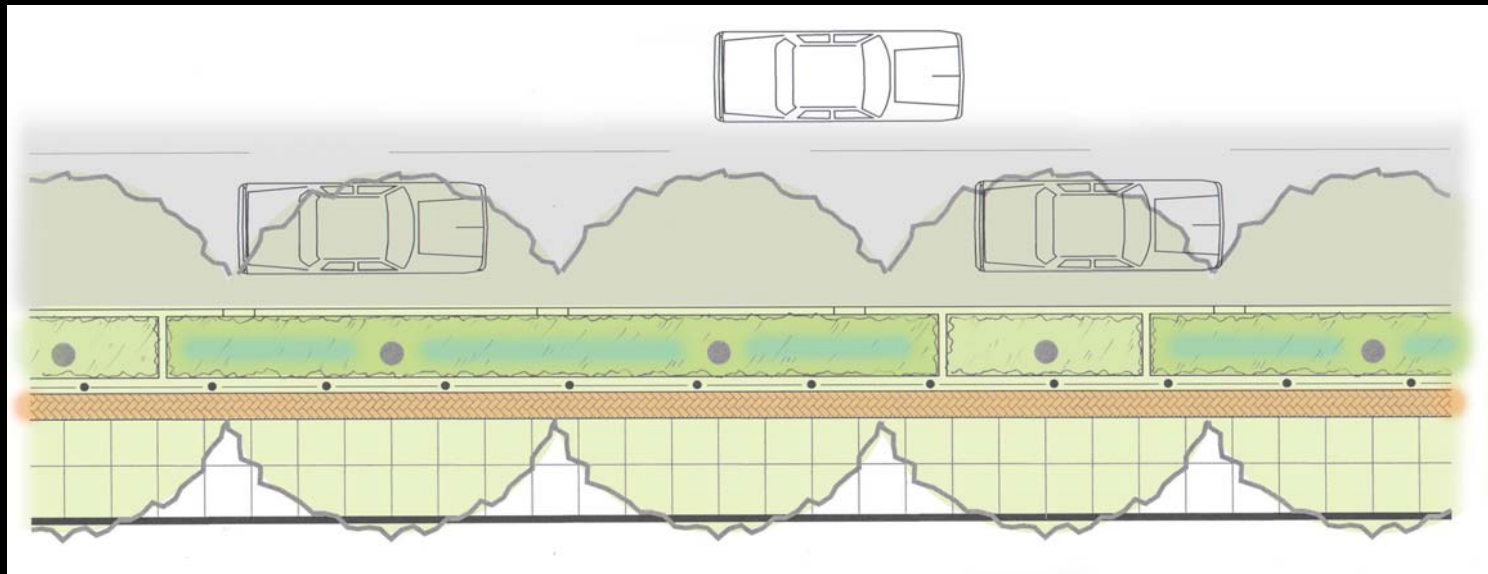
Virginia Case Studies

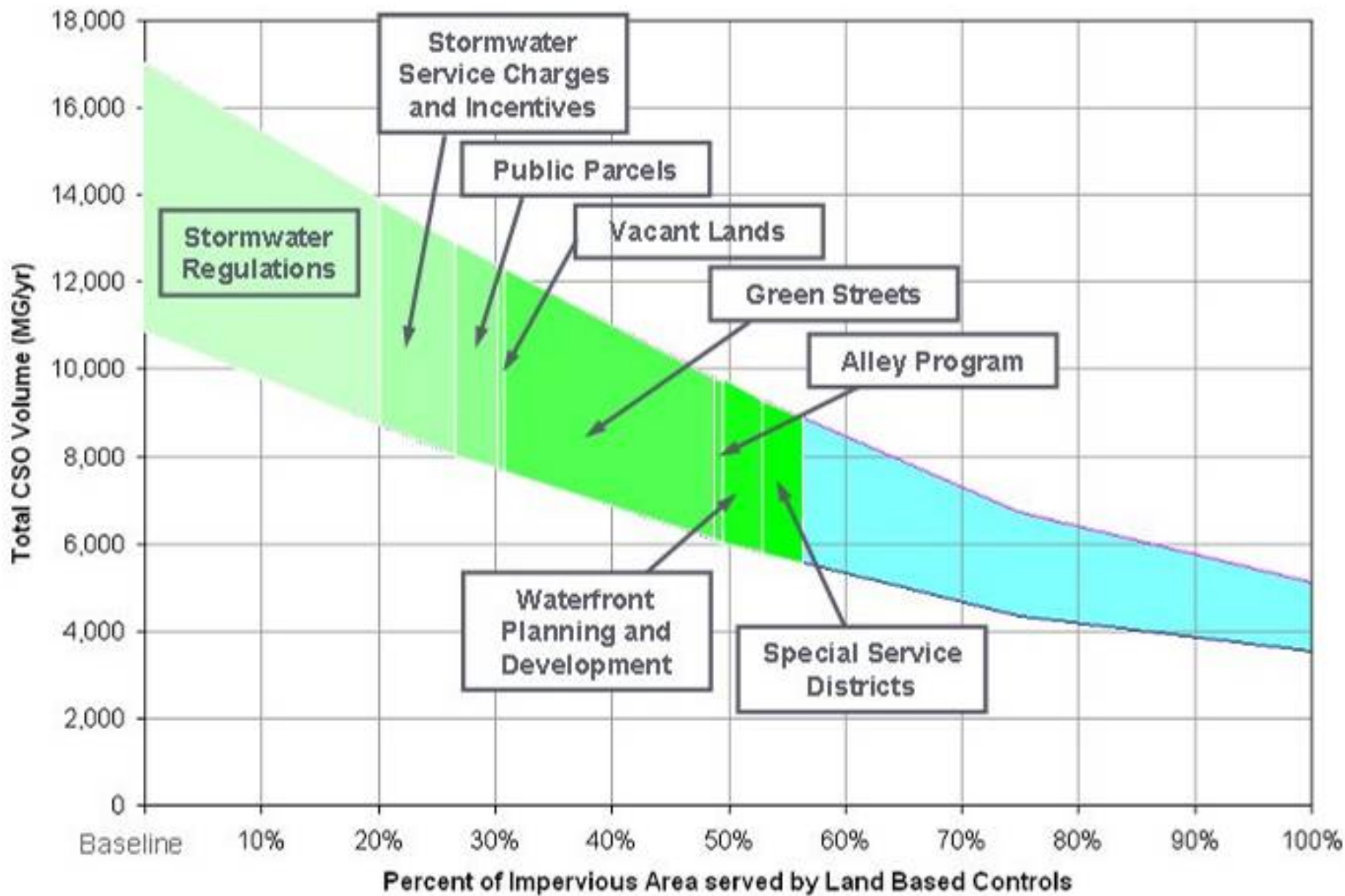
- SunTrust Bank green roof
 - Alliance for the Chesapeake Bay and SunTrust, Mid-Atlantic
 - 11,800 square feet at \$15.7/square foot = \$185,260

- Stafford County Administration Center
 - Friends of the Rappahannock

- Richmond Capital Green Street
 - EPA and US Fish and Wildlife (possibly)

Green Streets Capital Program- Richmond, VA





Types of Incentives

- ❑ Fee Discount
- ❑ Development Incentives
- ❑ Rebates & Installation Financing
- ❑ Stormwater Regulation
- ❑ Awards & Recognition Programs



Fee-based Incentives



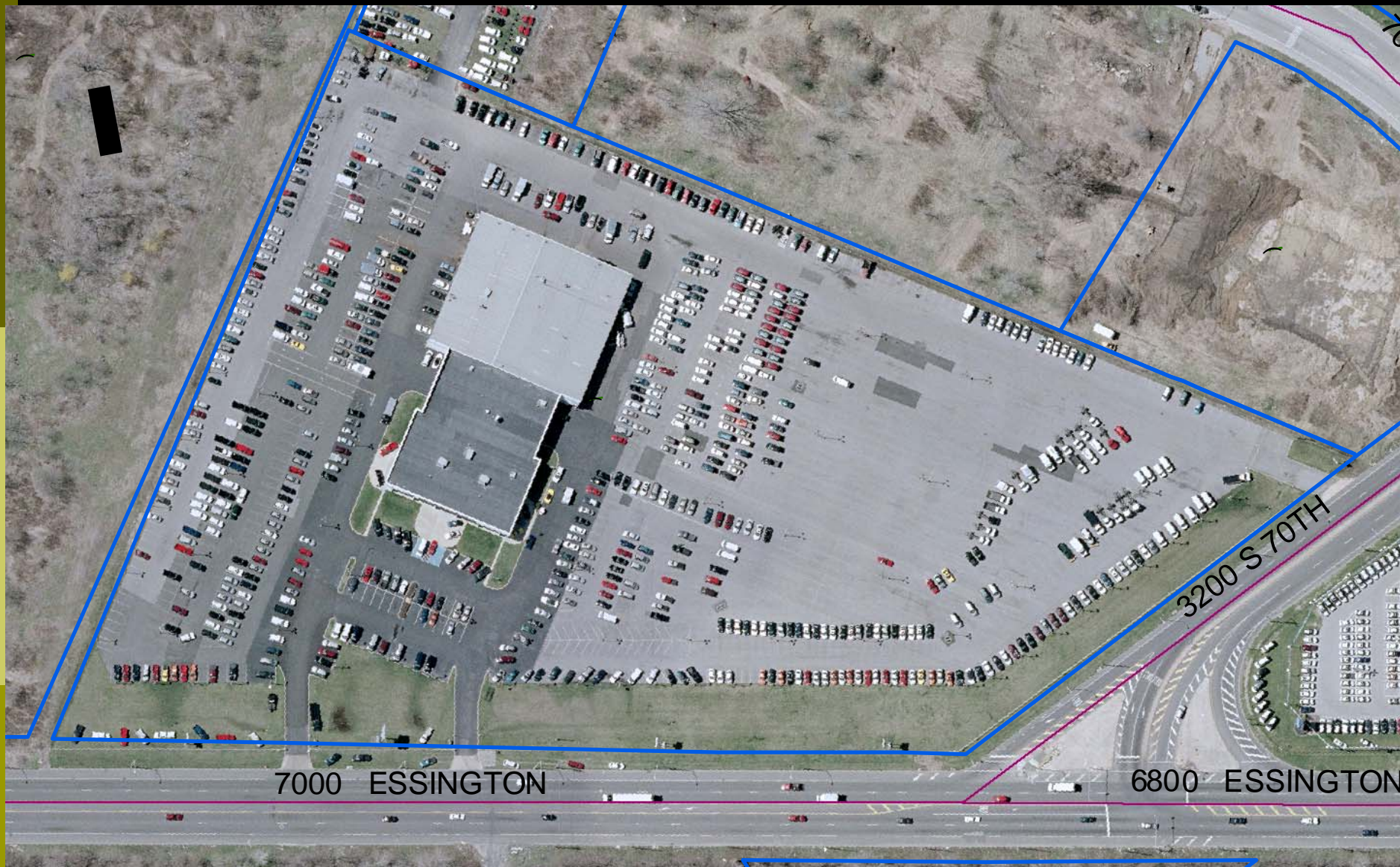
Portland, OR

- Up to 100% discount off on-site fee, or 35% of total stormwater charge
- Single-family home discount based on roof runoff management
- Commercial, industrial, multi-family home discount based on runoff managed from roof *and* paved areas
- Partial credit for tree planting, ecoroofs and less than 1000 sq ft imperviousness

Philadelphia, PA

- 50% discount for residents and businesses
- Decrease directly connected impervious areas
 - Rain gardens, porous asphalt and sidewalks, swales, green roofs.





Gross Area = 600,000 sq ft
Imperv Area = 500,000 sq ft

Existing Charge = \$ 400
New Charge = \$ 2500



Gross Area = 24,000
Imperv Area = 24,000

Existing Charge = \$ 4700
New Charge = \$ 120

Toledo, OH

- ❑ Credits available only for non-residential property owners
- ❑ Maximum credit of 50%
- ❑ Credit awarded for impervious area managed by practices that reduce runoff and pollution
- ❑ Different credit amounts for each practice
 - 10% credit for brownfield reuse
 - 30% credit for forested buffer or swale

Other Fee-based Incentives

- ❑ Chesapeake, VA
- ❑ Denver, CO
- ❑ Sandy, OR
- ❑ Henry County, GA
- ❑ Marysville, WA



Types of Incentives

- ❑ Fee Discount
- ❑ Development Incentives
- ❑ Rebates & Installation Financing
- ❑ Stormwater Regulation
- ❑ Awards & Recognition Programs



Development Incentives

- Chicago
 - Green Permit Program
- Philadelphia
 - Green Roof Tax Credit
 - Unofficial expedited permitting
- Portland
 - Floor Area Ratio Bonus



Types of Incentives

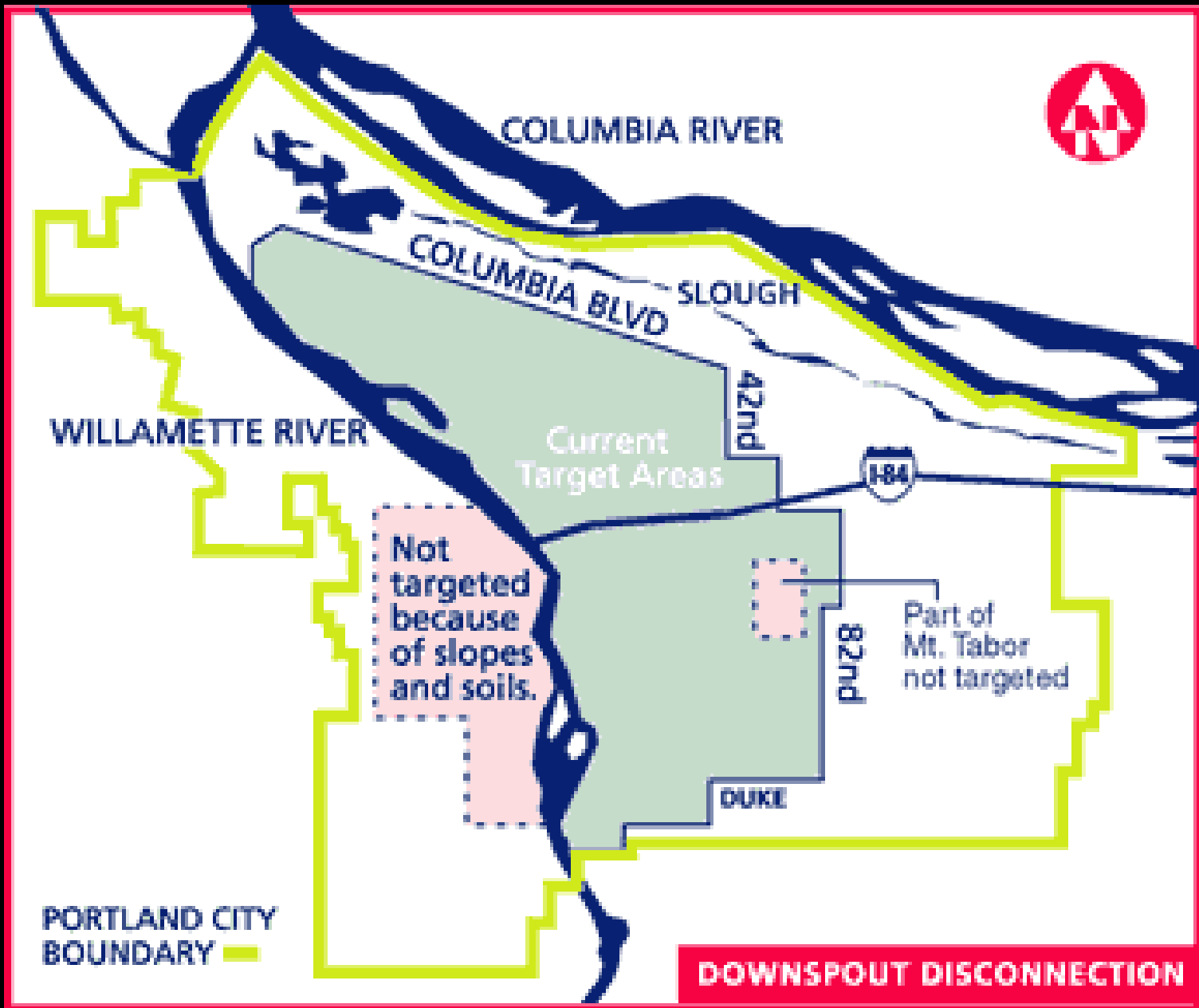
- ❑ Fee Discount
- ❑ Development Incentives
- ❑ Rebates & Installation Financing
- ❑ Stormwater Regulation
- ❑ Awards & Recognition Programs



Rebates & Installation Financing

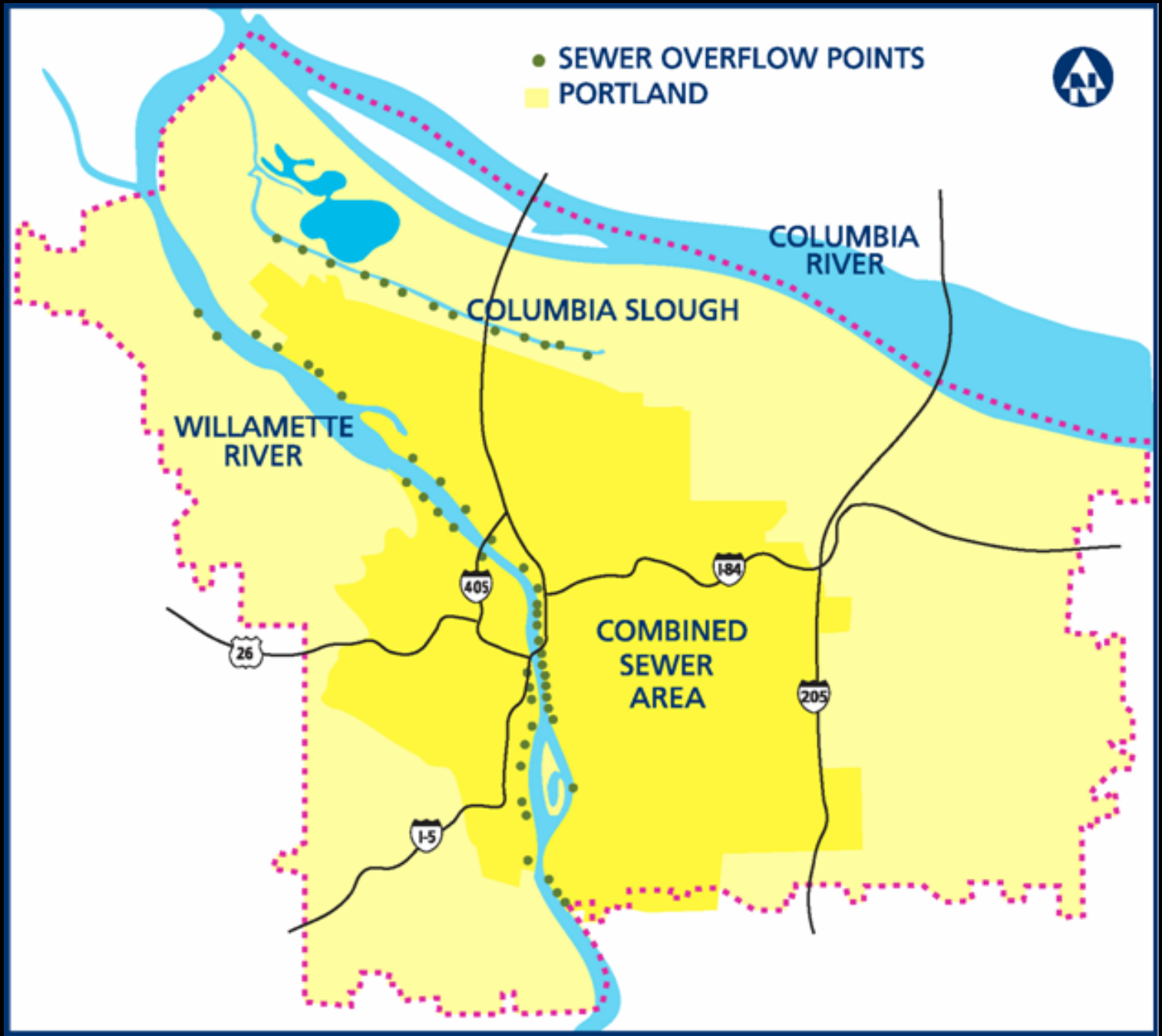
- Downspout disconnection
 - Portland
 - 60,000 downspouts
 - 1.5 billion gallons annually out of CSS
 - Seattle
 - Rainwise Incentive Program





DOWNSPOUT DISCONNECTION

- SEWER OVERFLOW POINTS
- PORTLAND



Rebates & Installation Financing

- **Austin:** Rebate for rain barrel and irrigation
- **DC:** River Smart Homes, \$1200
- **Montgomery County, MD:** RainScapes Rewards, \$1200 homes, \$5000 commercial & multi-family
- **Chicago:** Green Roof Grants, \$5000
- **Portland:** Community Watershed Stewardship Grants
- **Minneapolis:** \$2000 residential, \$30,000 commercial/government
- **Santa Monica:** Landscaping grants

Types of Incentives

- ❑ Fee Discount
- ❑ Development Incentives
- ❑ Rebates & Installation Financing
- ❑ Stormwater Regulation
- ❑ Awards & Recognition Programs



Stormwater Regulation

▣ Philadelphia's Stormwater Requirement

Requirement	New Development	Redevelopment
Water Quality	Comply	Comply
Channel Protection	Comply	May be Exempt
Flood Control	Comply	May be Exempt
Nonstructural Site Design	Comply	Comply

▣ San Jose

Types of Incentives

- ❑ Fee Discount
- ❑ Development Incentives
- ❑ Rebates & Installation Financing
- ❑ Stormwater Regulation
- ❑ Awards & Recognition Programs



Awards and Recognition Programs



- Chicago
 - Mayor Daley's GreenWorks Awards
- Portland
 - BEST (Businesses for an Environmentally Sustainable Tomorrow)
 - Eco-logical Business Program
- Philadelphia
 - Stormwater BMP Recognition Program
- King County, WA
 - Businesses for Clean Water
 - Greening In Place Awards

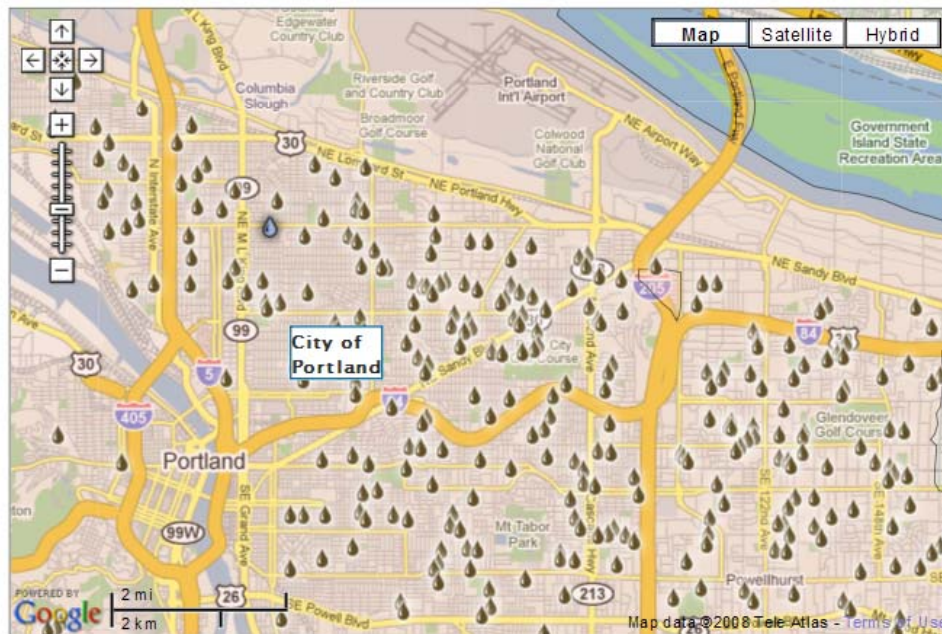
Stormwater Management

Portlanders Take Action!

Many Portland property owners have already taken action to create a more sustainable city. Use the map below to explore what others in our community have already done and get ideas about what you can do to go green and earn green in return.

Don't see your actions on the map? Log in above, add your actions, and the map will be updated automatically.

Region: ▼



 Current Property

2138 NE 10TH AVE, Portland, Oregon 97212

Find another Property:

[Go](#)

Most Popular Solutions in Portland



Eco-roof

[Learn More](#)



Trees

[Learn More](#)



Infiltration Planter

[Learn More](#)



Rain Garden

[Learn More](#)

Abby Hall
hall.abby@epa.gov
202- 566-2086



<http://picasaweb.google.com/buildgreeninfrastructure>